

Culturally-Informed Data Collection:

A Community-Based Participatory Approach

Traci Norman, Addiction Treatment in the Black Community

"I Can Show You Better Than I Can I Tell You."~ Ms. Barbara



Agenda

- Introductions
- Black & Brown Individuals & Research
- Community-Based Participatory Research
- Data Collection
- Applied Harm Reduction Principles
- ATBC Model
 - Integration of SDOH

Introductions...yes you have to talk 😊

- [Preferred] Name, [Preferred] Pronouns
- JWC Job Title
 - What are your position responsibilities?
- What attracted you to the position?

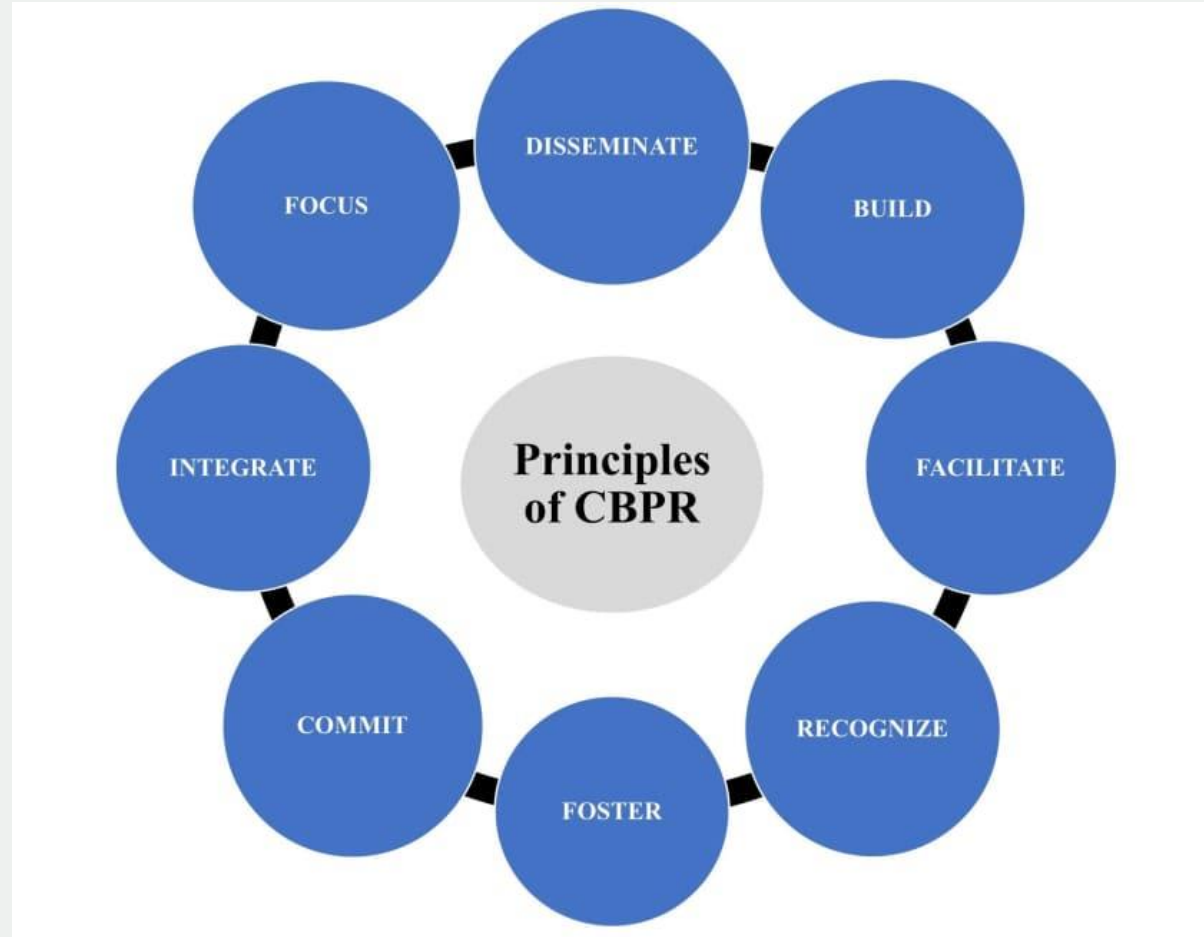


Black & Brown Individuals & Research

- What has been/is your targeted populations' perception of research?
- What are general feelings/assumptions about research?

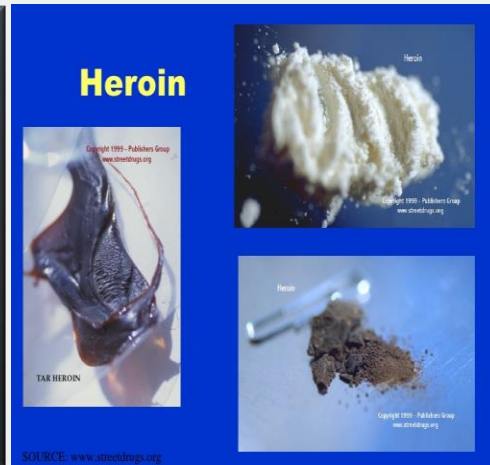


Community-Based Participatory Research

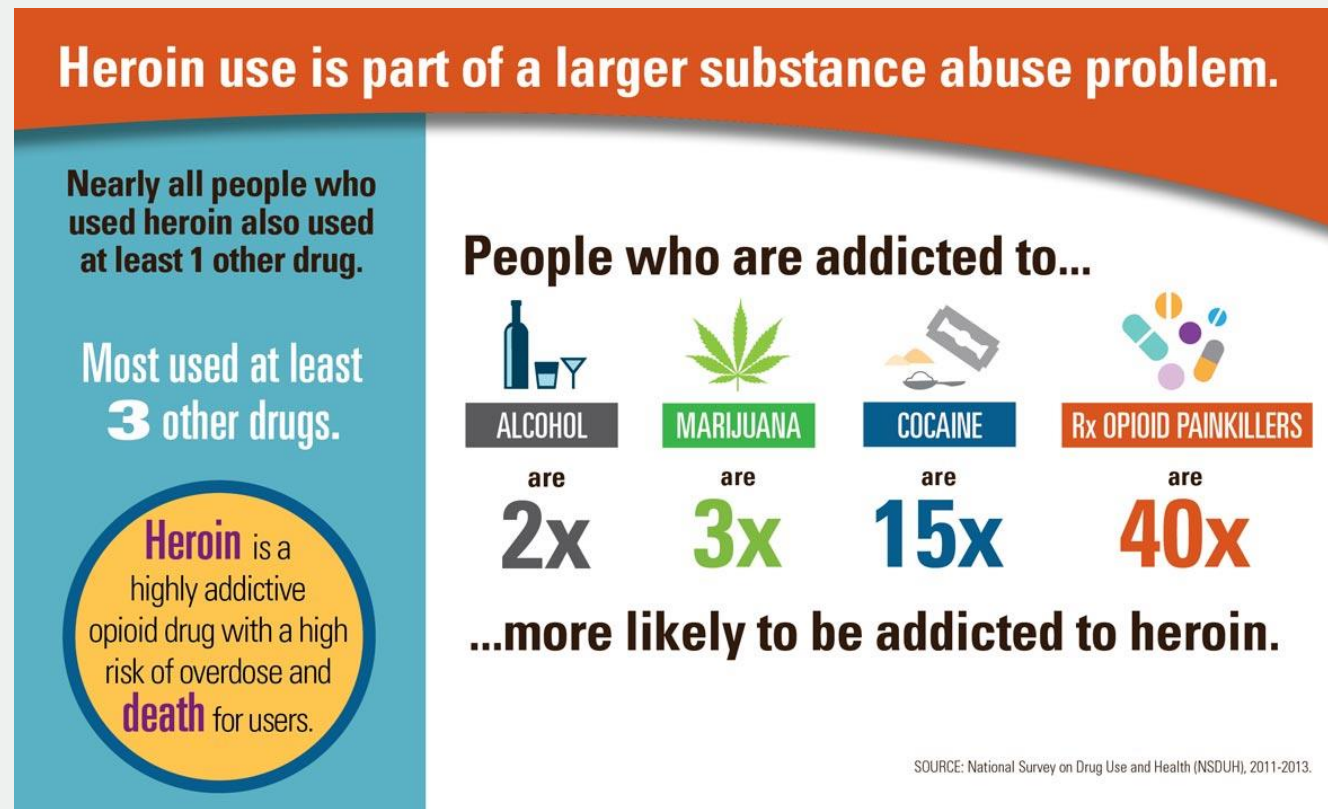


Substance Use

- Use terminology participant uses (i.e., "weed", "crack"-cocaine, "percs", etc.)



Most People Who Use Heroin Use At Least 1 More Drug



What to Expect...

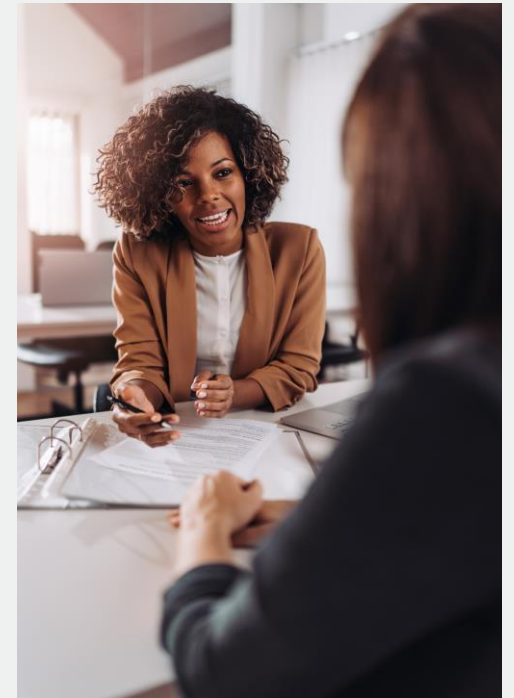


Before the Interview

- Are you knowledgeable of the targeted population's **culture**?
 - Religious holidays
 - Celebrations (i.e., quinceaneras, bat mitvah, annual family reunions, etc.)
 - Preferred food (if providing snacks, meals)
- Are you knowledgeable of the **community/neighborhood** we're serving?
 - Neighborhood notables & landmarks
 - Community Resources (i.e., shelters, food pantries)
 - Create/Share Resource List
 - Community "Happenings"
- What information are you hoping to gain from this research?
- **Familiarize yourself with the assessment questions**
 - Anticipate questions participants may have
 - Anticipate words that may be unknown to participants (i.e., paraphernalia, confiscate, etc.)
- Relatability → Creates comforting environment

What Can YOU Expect?

- Questions From Individuals/Participants
- Flexibility to “Expect the Unexpected”
 - Anticipate alternate locations if needed
- Withdrawal symptoms
 - Anxiousness, fidgeting, scratching, etc.
- Intoxication
 - Slurring words
 - Nodding off
 - Stimulants can cause dilated pupils
 - Opioids can cause pinpoint pupils, dilates with withdrawal

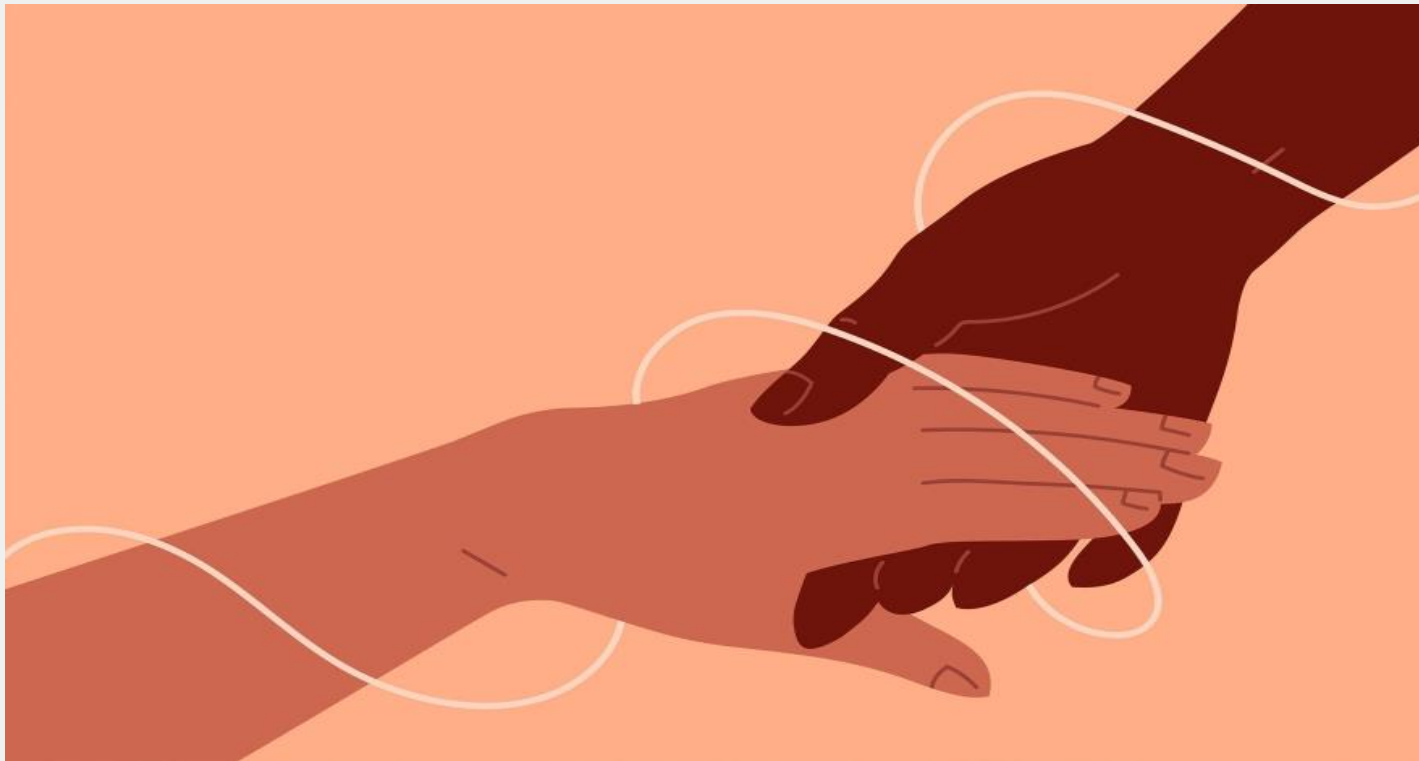


Inform Participant of All Aspects of Interview

- What to expect from YOU:
 - ***“First, I am going to read the questions exactly as written; so, I may not be able to look at you directly when asking the questions. If you are not CLEAR on any words or phrases in the questions, please stop me and let me know!”***
 - Preface if the assessment section is a challenging one (i.e., discussing trauma, overdoses, etc.)
 - Read the question as is
 - Answer clarifying questions when asked
 - Repeat question from start stating the confusing word/phrase followed by the understandable word/phrase
 - ***“During the interview, I may jot things down - remember everything is anonymous and there are no ‘right or wrong’ answers.”***

Harm Reduction

"Meeting Individuals Where They [Currently] Are To Get Them Where THEY Want To Be!"



Harm Reduction

Harm reduction, or harm minimization, refers to a range of intentional practices and public health policies designed to lessen the negative social and/or physical consequences associated with various human behaviors, both legal and illegal.



Example

- You reconnect with a participant who has been unreachable
- He states he was held in jail for 3 weeks & has a new number
- During the interview, the participant reveals that he can no longer stay with his sister, so he is currently unhoused
- He answers all questions without any need for clarification

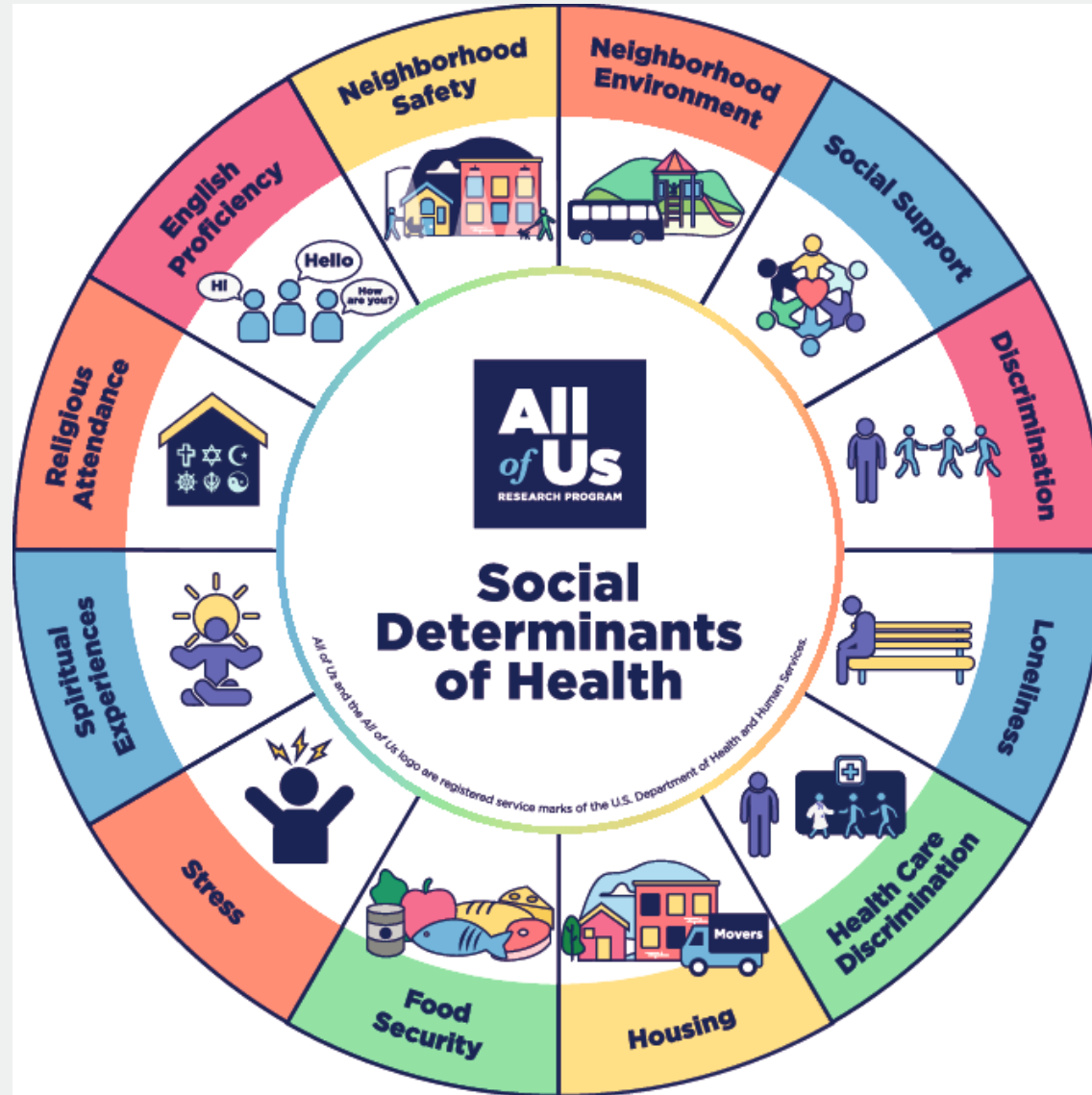
What are YOUR next steps?

ATBC & Data Collection

- How it works?
 - Utilization of Community Health Representatives (lived experience & familiarity w/ target neighborhood)
 - Builds rapport with participants → has direct contact information
 - Re-connection if participants unable to be reached
 - Utilization of Church-based Health Advisors
 - Assists in addressing participants SDOH needs
 - Research team collects data following or before church sessions
 - **SHOW** participants that they are MORE than data
 - EXPRESS **gratitude** for their participation
 - How it will impact their community in the future



SDOH



THANK YOU!

Traci Norman

Program/Project Manager, **Addiction Treatment in the Black Community**

(203)833-4267

Traci.Norman@nyulangone.org

